

ACDEU

**Super
T SERIES**

Diesel Engine Driven Self Priming Centrifugal Pump w/Autostart Model T10A60S-BF6L Size 10" x 10"



Total Head		Capacity of Pump in U.S. Gallons per Minute (GPM) at Continuous Performance			
P.S.I.	Feet				
59.8	138	570	570	570	570
52.0	120	1650	1750	1750	1750
43.4	100	1820	2360	2770	2820
34.7	80	1880	2430	2900	3280
26.0	60	1950	2500	2975	3370
17.4	40	2000	2600	3050	3420
Suction Lift		25'	20'	15'	10'

PUMP SPECIFICATIONS**Size:** 10" x 10" NPT (254 mm x 254 mm) - Female.**Casing:** Gray Iron No. 30. Maximum Operating Pressure 100 psi (690 kPa).***Open Type, Two Vane Impeller:** Ductile Iron No. 65-45-12. Handles 3" (76,2 mm) Diameter Spherical Solids.**Impeller Shaft:** Stainless Steel No. 17-4 PH.**Replaceable Front Wear Plate:** Ductile Iron No. 80-60-03.**Replaceable Rear Wear Plate:** Carbon Steel Plate.**Removable Clean-Out Cover Plate:** Gray Iron No. 30; 9 lbs. (4 kg).**Flap Valve:** Neoprene w/Steel Reinforcing.**Intermediate:** Gray Iron No. 30.**Seal Plate:** Gray Iron No. 30.**Shaft Sleeve:** Alloy Steel No. 4130.**Seal:** Cartridge Type, Mechanical, Oil-Lubricated, Double Floating, Self-Aligning. Silicon Carbide Rotating and Stationary Faces. Stainless Steel No. 316 Stationary Seat. Fluorocarbon Elastomers (DuPont Viton® or Equivalent). Stainless Steel No. 18-8 Cage and Spring. Maximum Temperature of Liquid Pumped 160°F (71°C).***Radial/Thrust Bearings:** Open Double Ball.**Bearing and Seal Cavity Lubrication:** SAE No. 30 Non-Detergent Oil.**Flanges:** 125# Gray Iron No. 30.**Suction Head:** Gray Iron No. 30.**Gaskets:** Buna-N, PTFE, Cork, and Rubber.**O-Rings:** Buna-N.**Hardware:** Standard Plated Steel.**Brass Pressure Relief Valve.****Bearing and Seal Cavity Oil Level Sight Gauges.****Standard Equipment:** Hoisting Bail. 90° Discharge Elbow. Strainer. Single Level Actuated (Microswitch) Type Liquid Level Control System with 50 Ft. (15,2 M) of Cable (Double Float System and Alternate Cable Lengths Available; Consult the Factory).**Optional Equipment:** Battery. G-R Hard Iron Seal Plate and Front Wear Plate. High Speed (55 MPH/89 KM/H) Wheel Kit with P225/75R15 Pneumatic Tires. EPS w/Submersible Transducer Liquid Level Sensor (50 Ft. [15,2 M] Cable Standard, Alternate Lengths Available).** Consult Factory for Applications Exceeding Maximum Pressure and/or Temperature Indicated.***ENGINE SPECIFICATIONS****Model:** Deutz BF6L.**Type:** Six Cylinder, Four Cycle, Air Cooled Diesel Engine.**Displacement:** 373.9 Cu. In. (6,1 Liters).**Governor:** Mechanical.**Lubrication:** Forced Circulation.**Air Cleaner:** Oil Bath.**Oil Reservoir:** 19.5 U.S. Qts. (18,4 Liters) Dry; 16.9 U.S. Qts. (16,0 Liters) Refill.**Fuel Tank:** 130 U.S. Gallons (492 Liters).**Full Load Operating Time:** 28.8 Hrs.**Starter:** 12V Electric.**Standard Features:** High Oil Temperature, Low Oil Pressure, V-belt And Start Failure Safety Shut Down Switches. Fuel Level Gauge. Throttle Control. Instrument Panel with: Temperature Gauge, Oil Pressure Gauge, Ammeter, Hourmeter, Tachometer, Manual/ Stop/Auto Key Switch, 8 Second Startup Warning Delay. Muffler w/Guard and Weather Cap.**DEUTZ PUBLISHED PERFORMANCE:**Maximum Continuous B.H.P. 148.2 (109 kW) @ 2500 RPM
Maximum Dynamic B.H.P. 160.5 (118 kW) @ 2500 RPM

THE GORMAN-RUPP COMPANY • MANSFIELD, OHIO

www.gormanrupp.com

GORMAN-RUPP OF CANADA LIMITED • ST. THOMAS, ONTARIO, CANADA

Specifications Subject to Change Without Notice

Printed in U.S.A.

Specification Data

SECTION 45, PAGE 1710

APPROXIMATE
DIMENSIONS and WEIGHTS

NET WEIGHT:
SHIPPING WEIGHT:
EXPORT CRATE SIZE:

SKID BASE

2-WHEEL

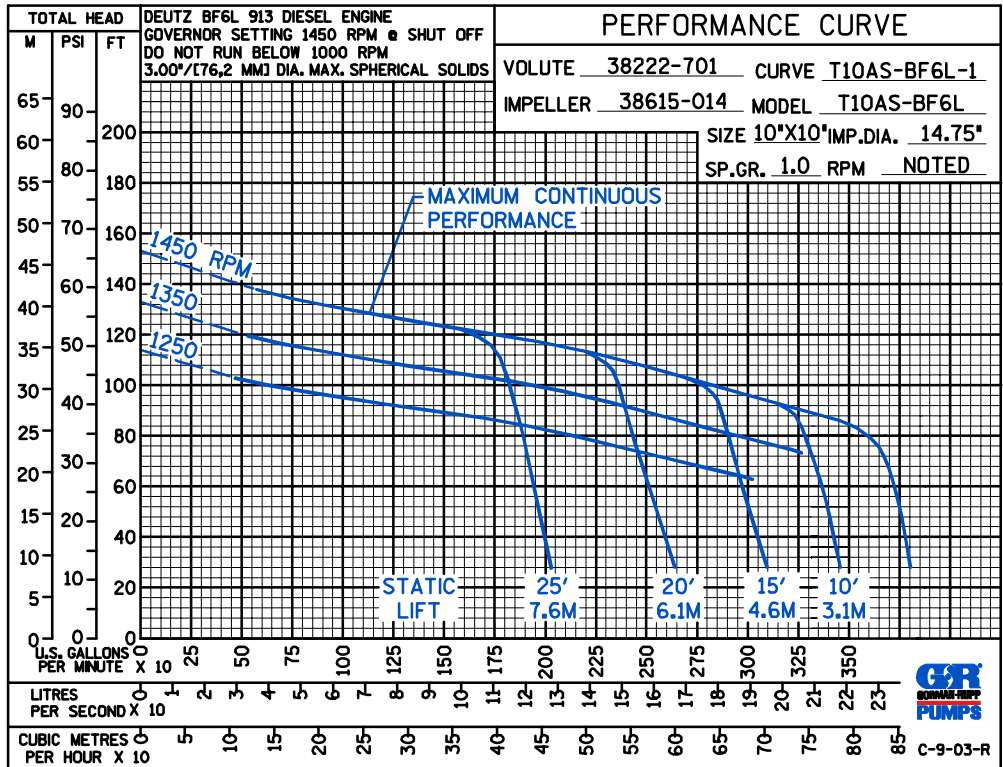
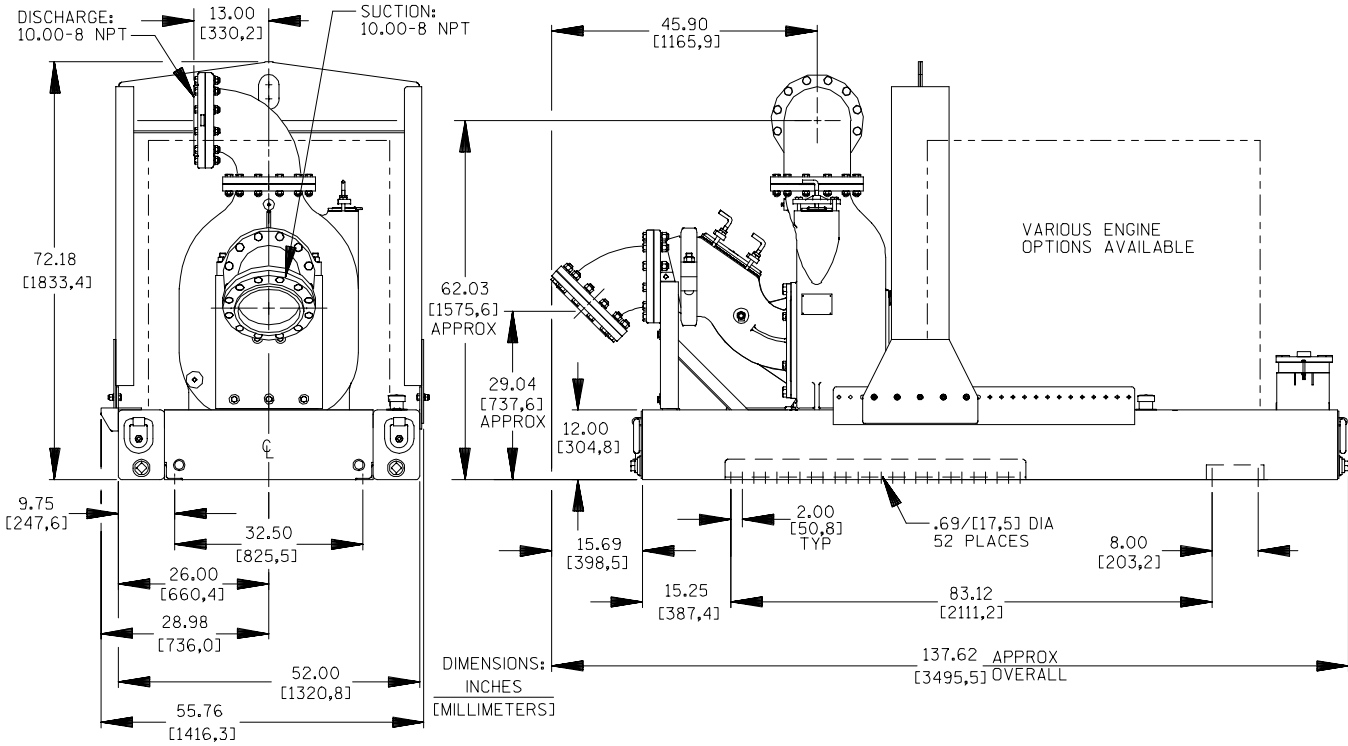
4960 LBS. (2250 KG.)

5470 LBS. (2481 KG.)

5160 LBS. (2341 KG.)

5470 LBS. (2481 KG.)

395 CU. FT. (11,2 CU. M.)



THE GORMAN-RUPP COMPANY • MANSFIELD, OHIO

GORMAN-RUPP OF CANADA LIMITED • ST. THOMAS, ONTARIO, CANADA

Specifications Subject to Change Without Notice

Printed in U.S.A.