

A C E G U



Submersible Pump

Electric Motor Driven

Models S2D3 115V 1P and S2D3A 115V 1P

Size 2"

PUMP SPECIFICATIONS

- Pump Casing:** Gray Iron; Maximum Operating Pressure 38 psi (2,7 kg/cm²).*
- Impeller:** Gray Iron.
- Motor Housing:** Gray Iron.
- Rotor Shaft:** Stainless Steel.
- Bearings:** Upper and Lower, Two Synthetic Seals, Single Row Ball Bearing.
- Hose Adapter:** Polyethylene.
- Impeller Cover:** Stainless Steel.
- Gaskets:** Neoprene and Vinyl.
- O-Rings:** Neoprene.
- Hardware:** Stainless Steel.
- Strainer:** Steel; 32% Open Area; Openings 0.276" (7mm) Diameter.
- Lifting Handle:** Steel.

Standard Equipment

- Power Cable Receptacle Plug: **S2D3A Only.**
- Built-In Liquid Level On/Off Control: **S2D3A Only.**
- 50 feet (15 m) Lifting Rope.

Optional Equipment

- Liquid Level Control with Float Switch: #27471-192 (*Requires Attaching a Standard 115V Plug (Not Supplied) to the Power Cord*) **S2D3 Only.**
- Base Plate Conversion Kit: # 48224-001 for Pump Down to 1/2" (13mm) Depth: **S2D3 Only.**

MOTOR/CABLE SPECIFICATIONS

- Motor:** 1 H.P.; 3450 R.P.M.;
115 Volt, Single Phase, 60 Hz;
9.0 Full Load AMPS, 0.986 kW (Max.).
- Power Cable:** 2 Conductor Plus 1 Conductor Ground;
Type SO/SOOW; 16 AWG.
Nominal Length 50 Feet (15 m).
- Recommended Generator Size:** 1.5 kW.



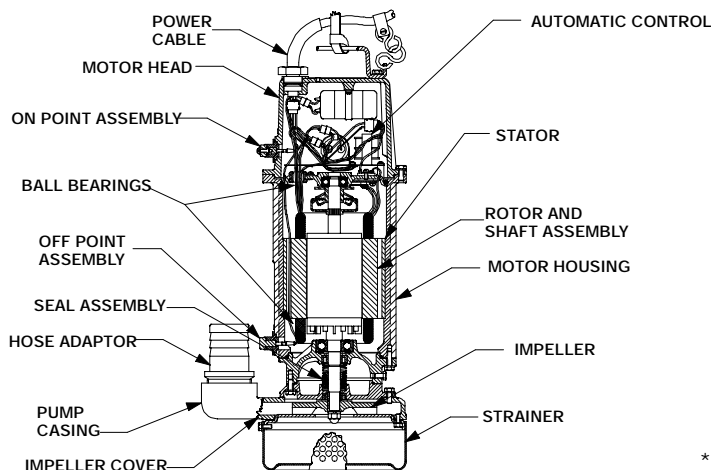
WARNING!

Do not use in explosive atmosphere or for pumping volatile flammable liquids.

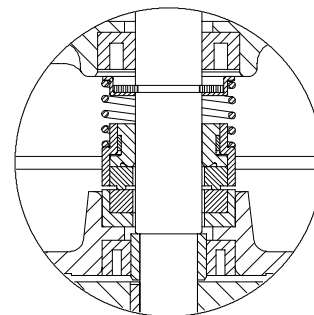
SEAL SPECIFICATION

Double, Mechanical, Oil-Lubricated. Bronze Rotating Face, Steel Stationary Face. Buna-N Elastomers. Stainless Steel Cage and Spring.

Maximum Temperature of Liquid Pumped 122°F (50°C).*



SEAL DETAIL



* Consult Factory for Applications Exceeding Maximum Pressure and/or Temperature Indicated.



THE GORMAN-RUPP COMPANY • MANSFIELD, OHIO

GORMAN-RUPP OF CANADA LIMITED • ST. THOMAS, ONTARIO, CANADA

Specifications Subject to Change Without Notice

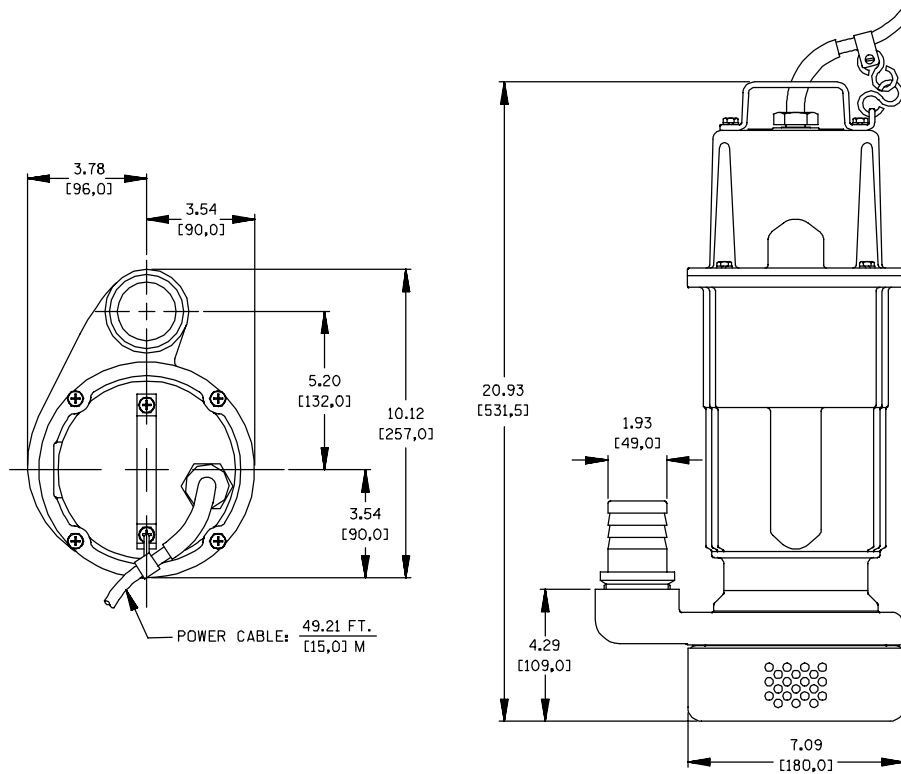
Printed in U.S.A.

Specification Data

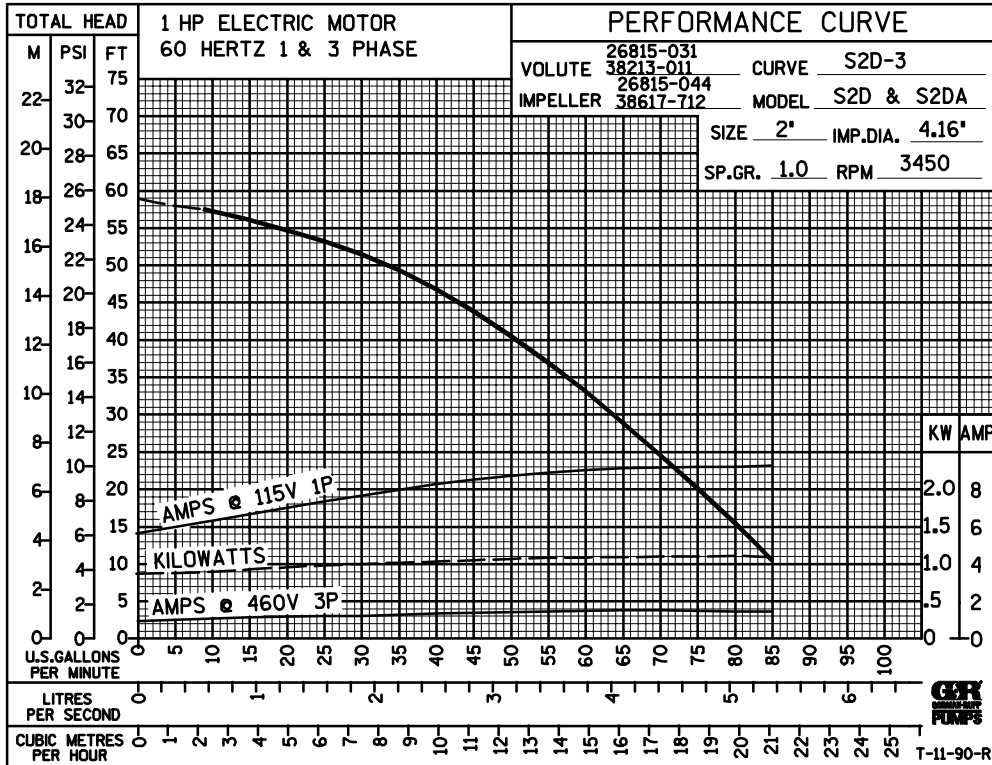
SECTION 130, PAGE 300

APPROXIMATE
DIMENSIONS and WEIGHTS

NET WEIGHT: 68 LBS. (30,8 KG.)
SHIPPING WEIGHT: 78 LBS. (35,4 KG.)
EXPORT CRATE: 3.9 CU. FT. (0,11 CU. M.)



DIMENSIONS:
INCHES
[MILLIMETERS]



THE GORMAN-RUPP COMPANY • MANSFIELD, OHIO

GORMAN-RUPP OF CANADA LIMITED • ST. THOMAS, ONTARIO, CANADA

Specifications Subject to Change Without Notice

Printed in U.S.A.