

ACDEU

# Priming Assisted Centrifugal Pump

Electric Motor Driven

## Model PA6C60-B-E50 460/3

### Size 6" x 6"



Total Head		Capacity of Pump in U.S. Gallons per Minute (GPM) at Continuous Performance		
P.S.I.	Feet			
46.8	108	440	440	440
43.4	100	840	840	840
39.0	90	1020	1140	1140
34.7	80	1100	1390	1390
30.3	70	1130	1510	1600
26.0	60	1135	1525	1750
21.7	50	1140	1535	1800
17.4	40	1140	1530	1800
13.0	30	1140	1530	1800
8.7	20	1140	1535	1800
<b>Suction Lift</b>		<b>25'</b>	<b>20'</b>	<b>15'</b>



#### PUMP SPECIFICATIONS

- Size:** 6" x 6" NPT (152 mm x 152 mm) - Female.
- Casing:** Ductile Iron No. 65-45-12. Maximum Operating Pressure 78 psi (538 kPa).\*
- Open Type, Two Vane Impeller:** Ductile Iron No. 65-45-12. Handles 3" (76,2 mm) Diameter Spherical Solids.
- Impeller Shaft:** Stainless Steel No. 17-4 PH.
- Replaceable Wear Plate:** Ductile Iron No. 80-60-03.
- Removeable Cleanout Cover Plate:** Gray Iron No. 30.
- Drive Flange:** Gray Iron No. 30.
- Seal Plate:** Gray Iron No. 30.
- Seal:** Mechanical, Oil-Lubricated, Double Floating Self-Aligning. Silicon Carbide Rotating and Stationary Faces. Stainless Steel No. 316 Stationary Seat. Fluorocarbon Elastomers (DuPont Viton® or Equivalent). Stainless Steel No. 18-8 Cage and Spring. Maximum Temperature of Liquid Pumped, 160°F (71°C).\*
- Shaft Sleeve:** Stainless Steel No. 17-4 PH.
- Priming Chamber:** Gray Iron No. 30.
- Discharge Check Valve:** Gray Iron No. 30 and Buna-N.
- Radial/Thrust Bearings:** Open Double Ball.
- Bearing and Seal Cavity Lubrication:** SAE No. 30 Non-Detergent Oil.
- Flanges:** Gray Iron No. 30.
- Gaskets:** Resistant Synthetic Rubber, Vegetable Fiber and Buna-N.
- O-Rings:** Buna-N.
- Hardware:** Standard Plated Steel.
- Bearing and Seal Cavity Oil Level Sight Gauges.**
- Standard Equipment:** Gear-Driven Air Compressor. Hoisting Bail. Skid Base. Strainer.
- Optional Equipment:** Consult Factory. Single Level Actuated (Microswitch) Type Liquid Level Control System with 50 Ft. (15,2 M) of Cable. Double Float System and Alternate Cable Lengths Available - Consult Factory.

\* Consult Factory for Applications Exceeding Maximum Pressure and/or Temperature Indicated.

### WARNING!

Do not use in explosive atmosphere or for pumping volatile flammable liquids.

#### MOTOR SPECIFICATIONS‡

- Type:** Totally Enclosed Fan Cooled.
- Frame Size:** 326T.
- Power:** 50 H.P. (37,3 kW).
- Voltage/Phase:** 460/3.
- Hz:** 60.
- S.F.** 1.25.
- Speed:** 1800 Nominal.
- Full Load Amps:** 57.
- Locked Rotor kVA Code:** G.
- Bearings:** Ball Type.

#### CONTROL SPECIFICATIONS

NEMA Type 3R Intrinsically Safe Rain and Sleet (Ice) Resistant Enclosure. Carbon Steel with ANSI 61 Powder Coat. Manual ON/OFF Control with Across-The-Line Starter. 3 Pole Instantaneous Trip 100 Amp Circuit Breaker Type HMCP. 8 Second Startup Warning Delay

‡ Standard Specifications Shown. Alternate Motors Available - Consult Factory.



THE GORMAN-RUPP COMPANY • MANSFIELD, OHIO

www.gormanrupp.com  
GORMAN-RUPP OF CANADA LIMITED • ST. THOMAS, ONTARIO, CANADA  
Specifications Subject to Change Without Notice

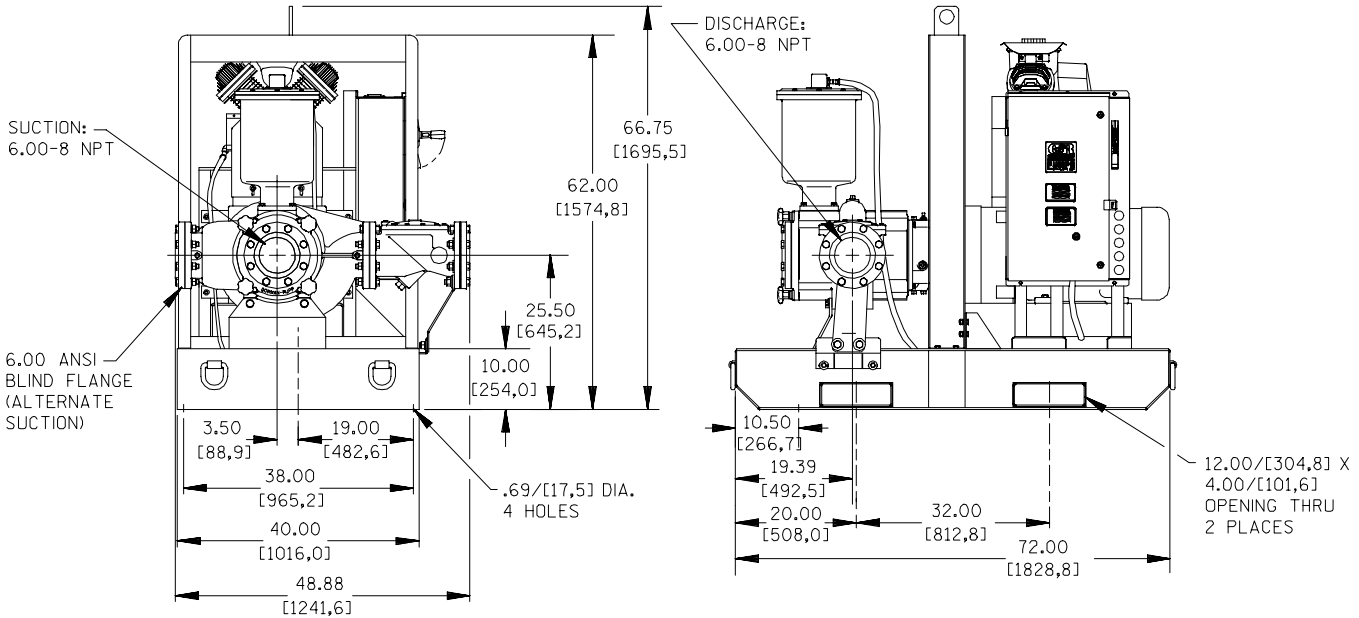
Printed in U.S.A.

**Specification Data**

SECTION 42, PAGE 600

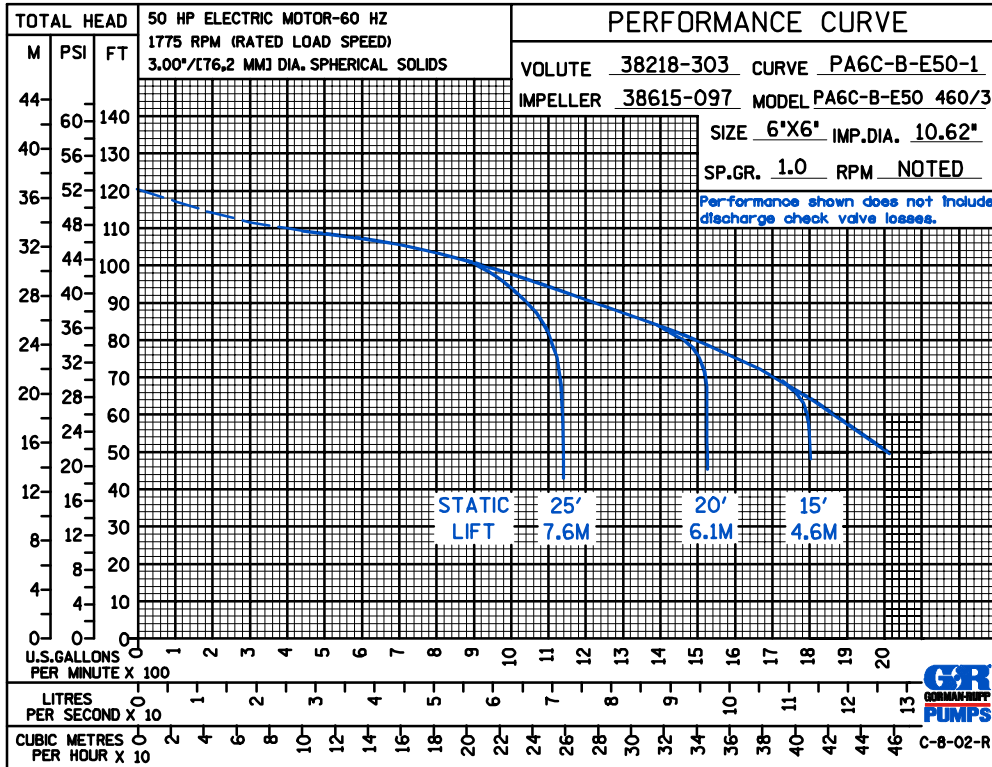
APPROXIMATE  
DIMENSIONS and WEIGHTS

	<b>SKID BASE</b>	<b>2-WHEEL</b>
<b>NET WEIGHT:</b>	3310 LBS. (1501 KG.)	3600 LBS. (1633 KG.)
<b>SHIPPING WEIGHT:</b>	3460 LBS. (1569 KG.)	3600 LBS. (1633 KG.)
<b>EXPORT CRATE SIZE:</b>	247 CU. FT. (7 CU. M.)	



DIMENSIONS:  
INCHES  
[MILLIMETERS]

POWERED BY: 50 HP, 1750 RPM, 326T FRAME MOTOR



THE GORMAN-RUPP COMPANY • MANSFIELD, OHIO

GORMAN-RUPP OF CANADA LIMITED • ST. THOMAS, ONTARIO, CANADA

Specifications Subject to Change Without Notice

Printed in U.S.A.