



Priming Assisted Centrifugal Pump

Diesel Engine Driven

Models PA6A60-F4L and PA6A60-F4L-A

Size 6" x 6"

Total Head		Capacity of Pump in U.S. Gallons per Minute (GPM) at Continuous Performance			
P.S.I.	Feet				
58.0	136	300	300	300	300
52.0	120	700	820	820	820
43.4	100	760	1040	1200	1200
34.7	80	790	1080	1355	1510
26.0	60	820	1125	1420	1640
17.3	40	840	1180	1480	1660
Suction Lift		25'	20'	15'	10'

PUMP SPECIFICATIONS

Size: 6" x 6" NPT (152 mm x 152 mm) - Female.

Casing: Gray Iron No. 30. Maximum Operating Pressure 99 psi (6,9 kg/cm²).*

Open Type, Two Vne Impeller: Ductile Iron No. 65-45-12. Handles 3" (76,2 mm) Diameter Spherical Solids.

Impeller Shaft: Stainless Steel No. 17-4 PH.

Replaceable Wear Plate: Steel No. 1018.

Intermediate Bracket: Gray Iron No. 30.

Seal Plate: Gray Iron No. 30.

Seal: Mechanical, Oil-Lubricated, Double Floating, Self-Aligning. Silicon Carbide Rotating and Stationary Faces. Stainless Steel No. 316 Stationary Seat. Fluorocarbon Elastomers (DuPont Viton® or Equivalent). Stainless Steel No. 18-8 Cage and Spring. Maximum Temperature of Liquid Pumped, 160°F (71°C).*

* Consult Factory for Applications Exceeding Maximum Pressure and/or Temperature Indicated.

Shaft Sleeve: Stainless Steel No. 17-4 PH.

Priming Chamber: Gray Iron No. 30.

Discharge Check Valve: Gray Iron No. 30 and Buna-N.

Radial Bearing: Open Single Ball.

Thrust Bearing: Open Double Ball.

Bearing Lubrication: Oil.

Flanges: Gray Iron No. 30.

Gaskets: Resistant Synthetic Rubber, PTFE, Cork, Vegetable Fiber, and Compressed Synthetic Fibers.

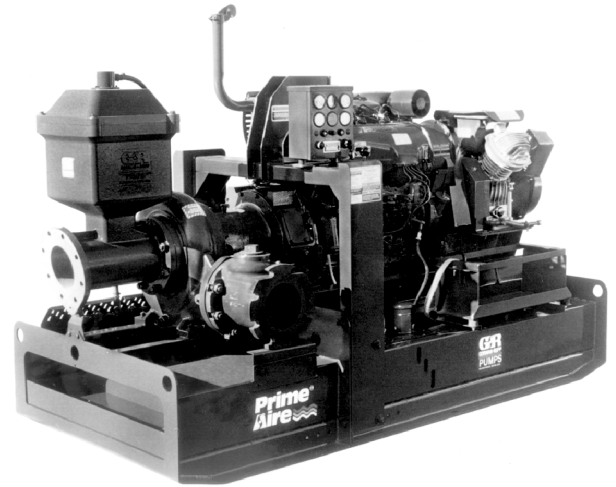
Hardware: Standard Plated Steel.

PA6A60-F4L-A ONLY: Liquid Level Controls: Submersible Transducer* and Electronic Pressure Switch (EPS) Control with Start/Stop Set Point Adjustments for Automatic Filling/Emptying.

* 50 Ft. (15 m) Standard Length; 150 Ft. (46 m) Maximum; Specify Length at Time of Order.

Standard Equipment: Bearing and Seal Cavity Oil Level Sight Gauges. Belt-Driven Air Compressor. Hoisting Bail. Skid Base. Strainer.

Optional Equipment: Battery. Two Wheel Truck Assembly with P225/75R15 Pneumatic Tires. Over-the-Road Trailer (Meets D.O.T. and Transport Canada Requirements). G-R Hard Iron Impeller, Seal Plate, and Wear Plate.



PA6A60-F4L SHOWN



WARNING!

Do not use in explosive atmosphere or for pumping volatile flammable liquids.

ENGINE SPECIFICATIONS

Model: Deutz F4L913.

Type: Four Cylinder, Four Cycle, Air Cooled Diesel.

Displacement: 249.3 Cu. In. (4,09 liter).

Governor: Mechanical.

Lubrication: Forced Circulation.

Air Cleaner: Oil Bath.

Oil Reservoir: 11.6 U.S. Qts. (11 liter) Dry; 10 U.S. Qts. (9,4 liter) Refill.

Fuel Tank: 65 U.S. Gals. (246 liter).

Full Load Operating Time: 22.7 Hrs.

Starter: 12V Electric.

Standard Features: Muffler w/Guard and Weather Cap. Low Oil Pressure and V-Belt Failure Safety Shut Down Switches. Instrument Panel with: Temperature Gauge, Oil Pressure Gauge, Ammeter, Hourmeter, Tachometer, and Alternator Failure Light.

DEUTZ PUBLISHED PERFORMANCE:

Maximum Continuous BHP 65.3 (48 Kw) @ 2000 RPM

Maximum Dynamic BHP 68 (50 kW) @ 2000 RPM



THE GORMAN-RUPP COMPANY • MANSFIELD, OHIO

GORMAN-RUPP OF CANADA LIMITED • ST. THOMAS, ONTARIO, CANADA

Specifications Subject to Change Without Notice

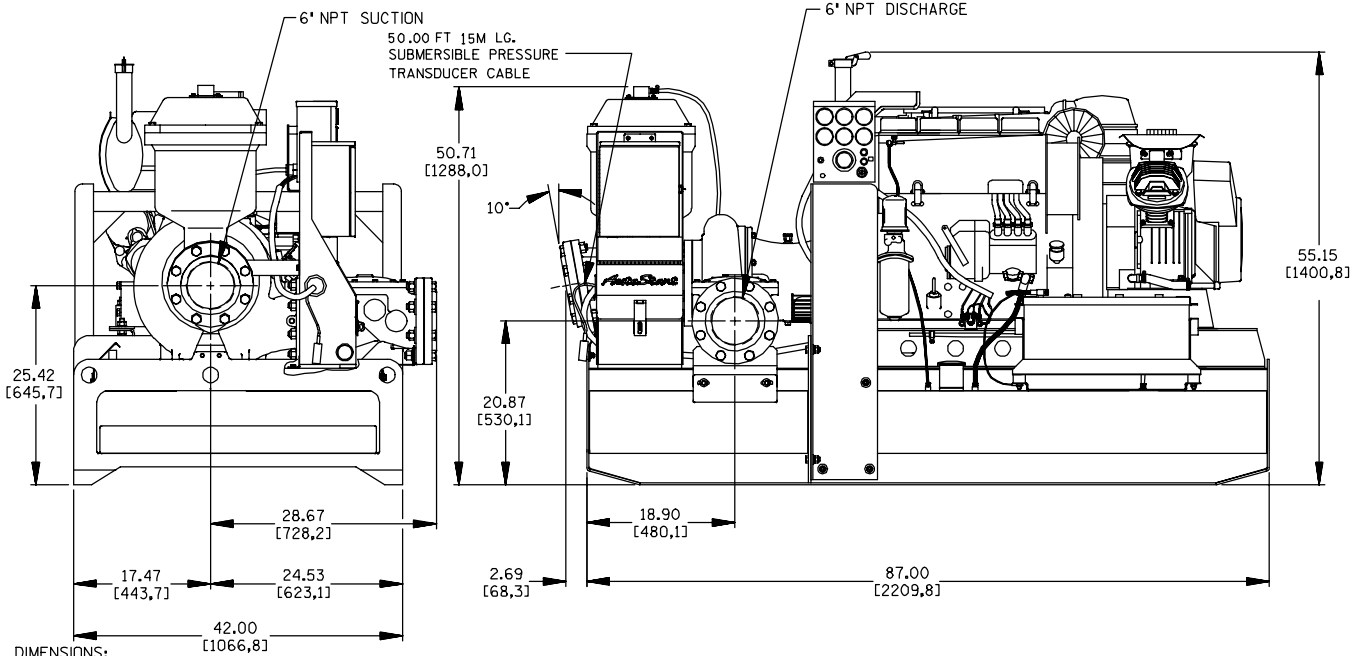
Printed in U.S.A.

Specification Data

SECTION 42, PAGE 700

APPROXIMATE DIMENSIONS and WEIGHTS

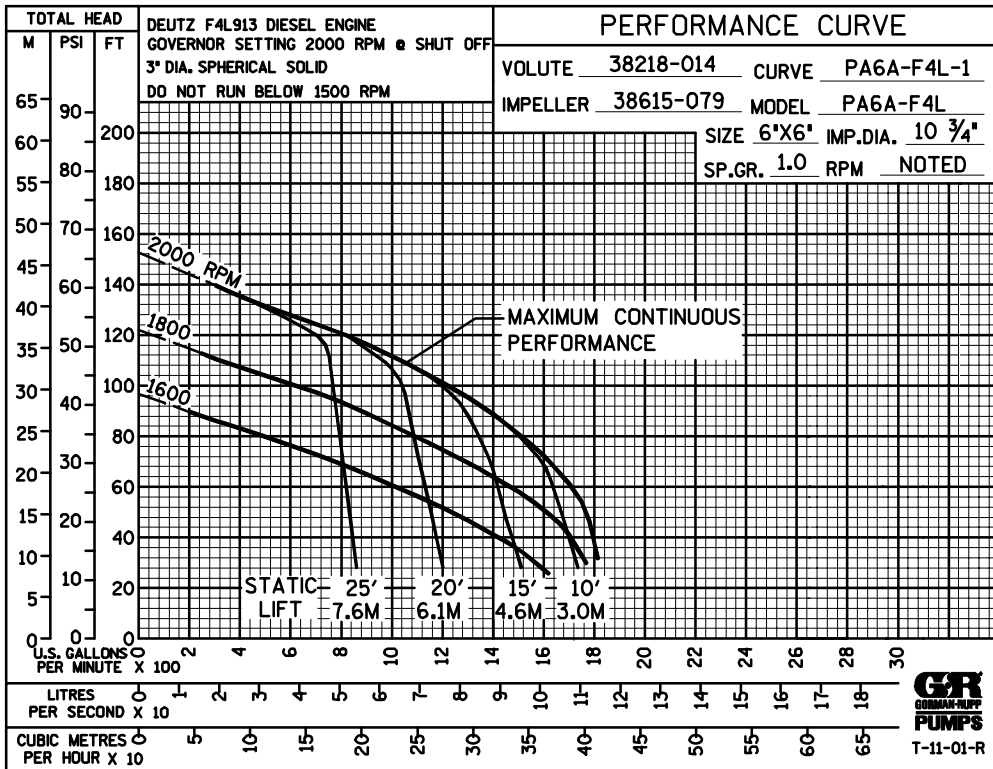
	<u>SKID BASE</u>	<u>2-WHEEL</u>
NET WEIGHT:	2662 LBS. (1207 KG.)	2948 LBS. (1337 KG.)
SHIPPING WEIGHT:	2704 LBS. (1227 KG.)	2990 LBS. (1356 KG.)
EXPORT CRATE SIZE:	117 CU. FT. (3,3 CU. M.)	377 CU. FT. (10,7 CU. M.)



DIMENSIONS:
INCHES
[MILLIMETERS]

PA6A60-F4L-A SHOWN

POWERED BY A DEUTZ F4L DIESEL ENGINE



T-11-01-R



THE GORMAN-RUPP COMPANY • MANSFIELD, OHIO

GORMAN-RUPP OF CANADA LIMITED • ST. THOMAS, ONTARIO, CANADA

Specifications Subject to Change Without Notice

Printed in U.S.A.