

ACE

Self Priming Centrifugal Pump



Diesel Engine Driven Model 88B2-F5L

Size 8" x 8"



125 M

Total Head		Capacity Of Pump In U.S. Gallons Per Minute (GPM) At Continuous Performance				
P.S.I.	Feet					
64.2	148	–	640	640	640	640
60.7	140	–	800	880	880	880
52.0	120	720	1060	1430	1500	1500
43.4	100	840	1230	1610	1820	1900
34.7	80	960	1340	1710	2010	2160
26.0	60	1060	1430	1800	2110	2280
17.3	40	1150	1510	1880	2180	2370
Suction Lift		25'	20'	15'	10'	5'

PUMP SPECIFICATIONS

Size: 8" X 8" (204 mm X 204 mm) N.P.T. Female.

Pump Casing: Gray Iron No. 30. Maximum Operating Pressure 111 psi. (765 kPa).*

Open Type, Three Vane Impeller: Gray Iron No. 30. Handles 2 3/8" (60,3 mm) Diameter Spherical Solids.

Impeller Shaft: Carbon Steel Grade 1045/1046.

Replaceable Wear Plate: Gray Iron No. 30.

Intermediate Bracket: Gray Iron No. 30.

Seal Plate: Gray Iron No. 30.

Seal: Double, Grease Lubricated with Spring-Loaded Grease Cup. Sintered Bronze Stationary Seal Seats. Steel Rotating Faces. Neoprene Packing Rings. Maximum Temperature of Liquid Pumped, 110°F (43°C).* Maximum Suction Pressure 10 psi (69 kPa).*

Seal Liner: Copper Alloy C26000.

Flap Valve: Buna-N with Nylon and Carbon Steel Grade C-1045.

Radial/Thrust Bearing: Tapered Single Row Roller.

Bearing Lubrication: Grease.

Flanges: Gray Iron No. 30.

Gaskets: Vegetable Fiber and Buna-N.

Hardware: Standard Plated Steel.

Hoisting Bail.

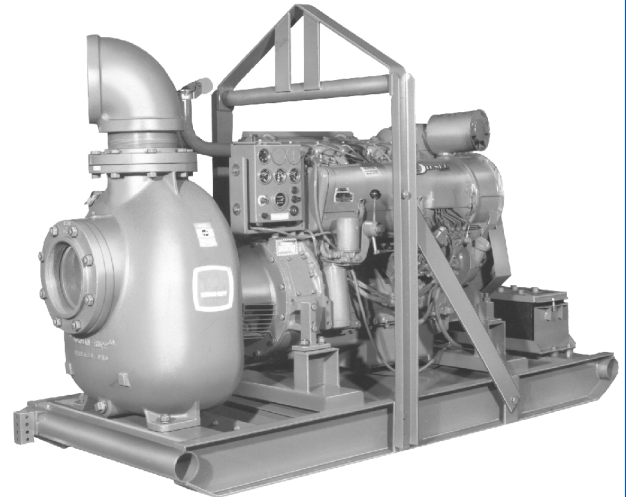
Skid Base.

90° Discharge Elbow.

Strainer.

Optional Equipment: Battery. Two Wheel Truck Assembly with P235/75R15 Pneumatic Tires. Over-the-Road Trailer (Meets D.O.T. and Transport Canada Requirements).

* Consult Factory for Applications Exceeding Maximum Pressure and/or Temperature Indicated.



ENGINE SPECIFICATIONS

Model: Deutz F5L912.

Type: Five Cylinder, Four Cycle, Air Cooled Diesel Engine.

Displacement: 287 Cu. In. (4,7 Liters).

Governor: Mechanical Flyweight.

Lubrication: Forced Circulation.

Air Cleaner: Oil Bath.

Oil Reservoir: 14.3 U.S. Qts (13,5 Liters) Dry.
12.7 U.S. Qts (12 Liters) Refill.

Fuel Tank: 38.9 U.S. Gallons (147,3 Liters).

Full Load Operating Time: 10.0 Hours.

Starter: 12 Volt Electric.

Standard Features: Safety Shut Down Switches for Low Oil Pressure and V-Belt Failure. Instrument Panel With; Temperature Gauge, Oil Pressure Gauge, Ammeter, Hour-meter, Tachometer and Alternator Failure Light. Muffler with Guard and Weather Cap.

DEUTZ PUBLISHED PERFORMANCE:

Maximum Continuous B.H.P. 78 @ 2300 RPM

Maximum Dynamic B.H.P. 92 @ 2800 RPM



THE GORMAN-RUPP COMPANY • MANSFIELD, OHIO

GORMAN-RUPP OF CANADA LIMITED • ST. THOMAS, ONTARIO, CANADA

www.gormanrupp.com

Specifications Subject to Change Without Notice

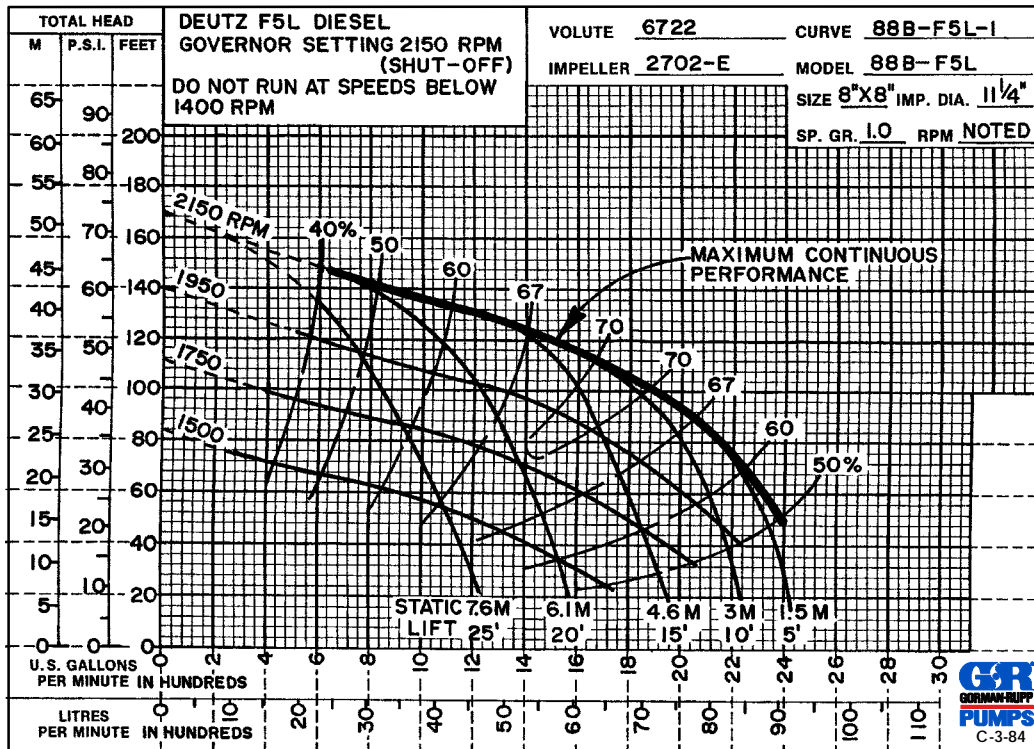
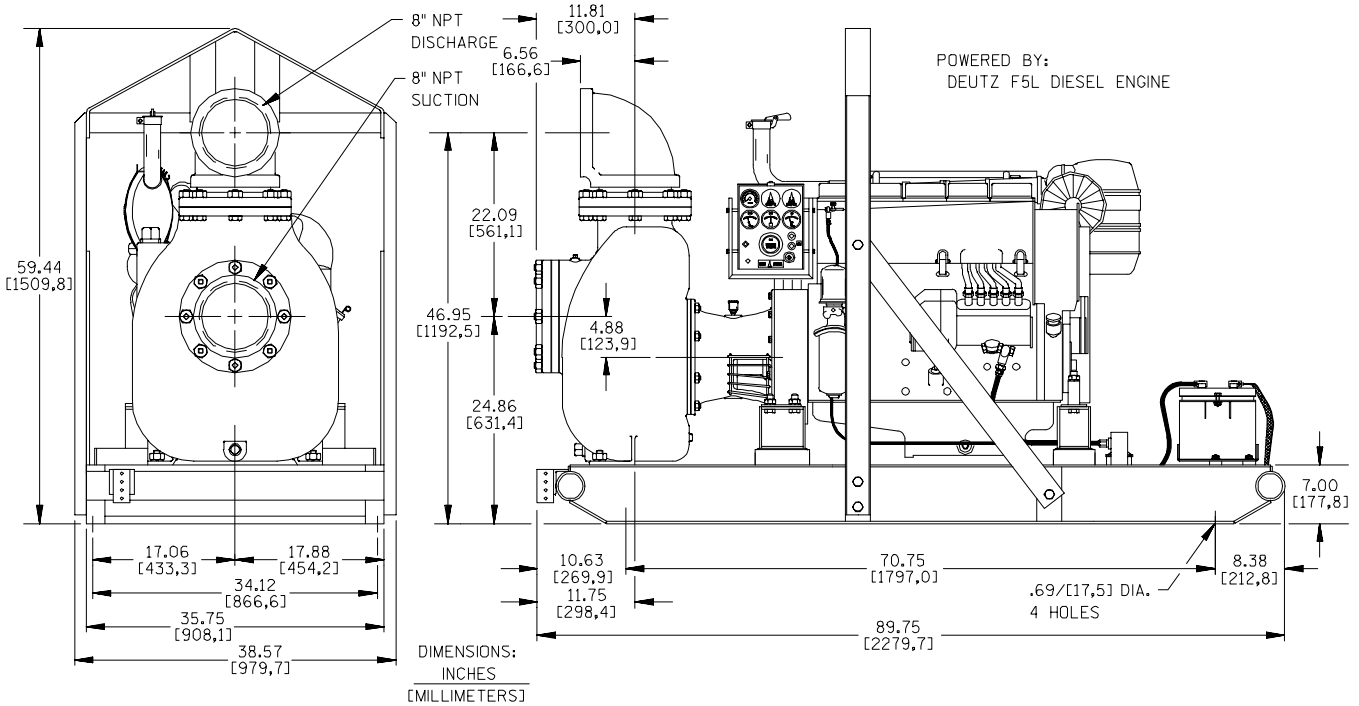
Printed in U.S.A.

Specification Data

SECTION 40, PAGE 2590

APPROXIMATE
DIMENSIONS and
WEIGHTS

	SKID BASE	2-WHEEL
NET WEIGHT:	2424 LBS. [1099,5 KG.]	2774 LBS. [1258,3 KG.]
SHIPPING WEIGHTS:	2528 LBS. [1146,7 KG.]	2774 LBS. [1258,3 KG.]
EXPORT CRATE:	139 CU. FT. [3.9 CU. M.]	



THE GORMAN-RUPP COMPANY • MANSFIELD, OHIO

GORMAN-RUPP OF CANADA LIMITED • ST. THOMAS, ONTARIO, CANADA

Specifications Subject to Change Without Notice

Printed in U.S.A.