



Self Priming Centrifugal Pump

Diesel Engine Driven
Model 810A2-F6L
Size 10" x 10"

Total Head		Capacity of Pump in U.S. Gallons per Minute (GPM) at Continuous Performance			
P.S.I.	Feet				
58.5	135	600	600	600	600
52.0	120	1040	1040	1040	1040
43.4	100	1720	1720	1720	1720
34.7	80	2040	2240	2320	2320
26.0	60	2140	2380	2620	2720
17.3	40	2230	2530	2740	2900
8.7	20	2300	2650	2840	3040
Suction Lift		20'	15'	10'	5'

PUMP SPECIFICATIONS

Size: 10" x 10" (254 mm x 254 mm) NPT - Female.

Pump Casing: Gray Iron No. 30.

Maximum Operating Pressure 99 psi (683 kPa).*

Semi-Open Type, Two Vane Impeller: Ductile Iron No. 65-45-12. Handles 2 1/2" (63,5 mm) Diameter Spherical Solids.

Impeller Shaft: Alloy Steel No. 4150.

Replaceable Wear Plate: Gray Iron No. 30.

Intermediate Bracket: Gray Iron No. 30.

Seal Plate: Gray Iron No. 30.

Seal: Double, Grease-Lubricated with Spring-Loaded Grease Cup. Sintered Bronze Stationary Seal Seats. Steel Rotating Faces. Neoprene Packing Rings. Maximum Temperature of Liquid Pumped, 110°F (43°C). Maximum Suction Pressure 10 psi (69 kPa).*

Seal Liner: Copper Alloy C93700.

Flap Valve: Neoprene ^w/Fabric Reinforcing, Gray Iron No. 30 and Ductile Iron 65-45-12.

Radial Bearing: Open Double Row Ball.

Thrust Bearing: Open Single Row Ball.

Bearing Lubrication: SAE No. 30 Non-Detergent Oil.

Flanges: Gray Iron No. 30.

Gaskets: Vegetable Fiber.

O-Rings: Buna-N.

Hardware: Standard Plated Steel.

Standard Equipment: Oil Level Sight Gauge, Hoisting Bail, Skid Base, Strainer and 90° Discharge Elbow.

Optional Equipment: Battery. High Speed (55 MPH/89 KM/H) Wheel Kit with P225/75R15 Pneumatic Tires. Over-the-Road Trailer (Meets D.O.T. and Transport Canada Requirements) Available ^w/Hydraulic Surge Brakes, Running Lights, Two Trailer Jack Stands and Safety Chains.

*Consult Factory for Applications Exceeding Maximum Pressure and/or Temperature Indicated.



ENGINE SPECIFICATIONS

Model: Deutz F6L.

Type: Six Cylinder, Four Cycle, Air Cooled Diesel Engine.

Displacement: 395 Cu. In. (6,5 Liters).

Governor: Mechanical.

Lubrication: Forced Circulation.

Air Cleaner: Oil Bath.

Oil Reservoir: 16.9 U.S. Qts. (16,0 Liters) Dry;
15.3 U.S. Qts. (14,5 Liters) Refill.

Fuel Tank: 38.9 U.S. Gals. (147,3 Liters).

Full Load Operating Time: 11.5 Hrs.

Starter: 12V Electric.

Standard Features: High Oil Temperature, Low Oil Pressure, V-belt, Alternator and Start Failure Safety Shut Down Switches/Indicators. Fuel Level Gauge. Throttle Control. Instrument Panel with: Temperature Gauge, Oil Pressure Gauge, Ammeter, Hourmeter, Tachometer, Start/Stop Key Switch, 15 Amp Fuse. Muffler ^w/Guard and Weather Cap.

DEUTZ PUBLISHED PERFORMANCE:

Maximum Continuous B.H.P. 103.4 (76 kW) @ 2300 RPM



THE GORMAN-RUPP COMPANY • MANSFIELD, OHIO

GORMAN-RUPP OF CANADA LIMITED • ST. THOMAS, ONTARIO, CANADA

www.grpumps.com

Specifications Subject to Change Without Notice

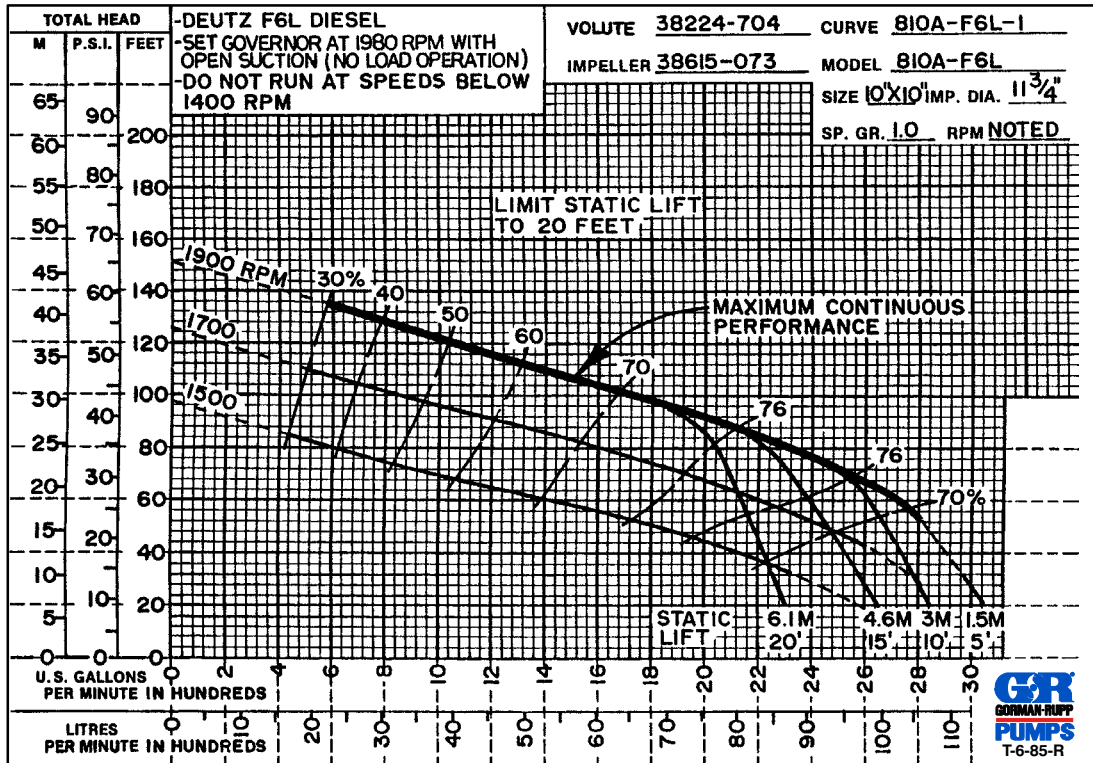
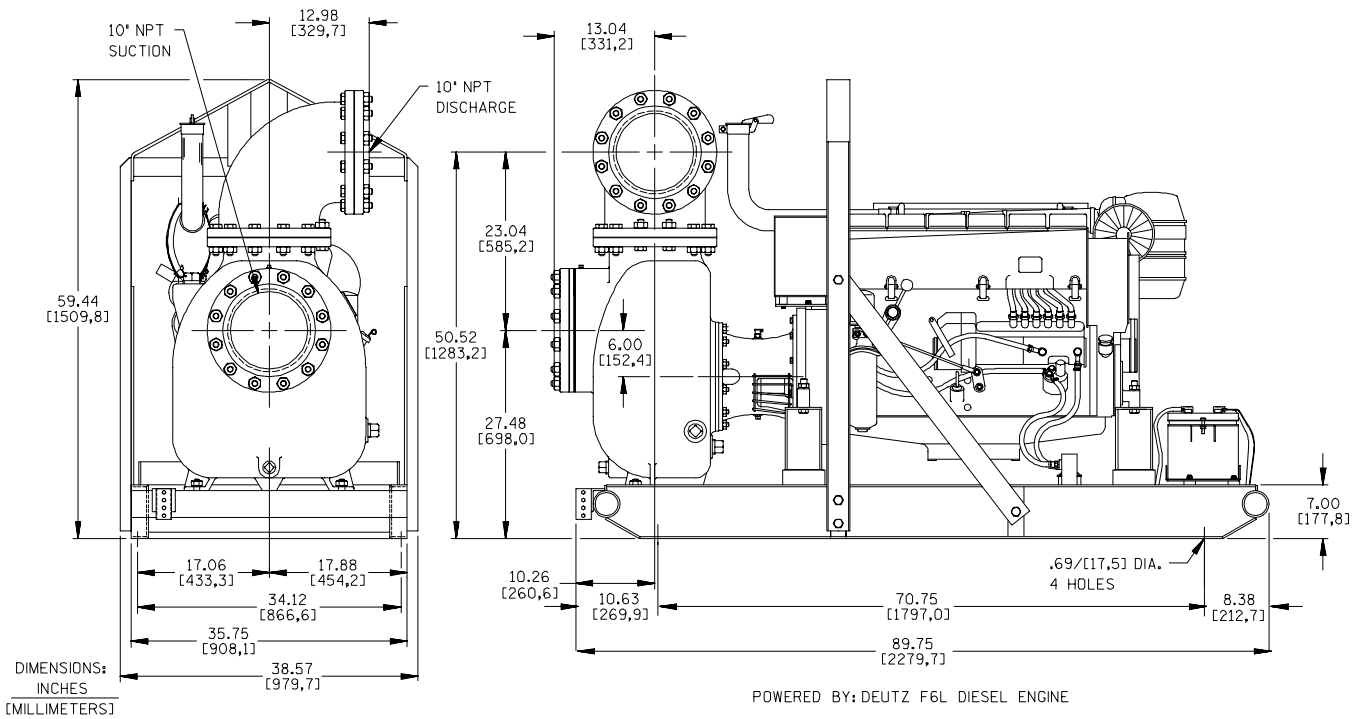
Printed in U.S.A.

Specification Data

SECTION 40, PAGE 2701

APPROXIMATE
DIMENSIONS and
WEIGHTS

	SKID BASE	2-WHEEL
NET WEIGHT:	2948 LBS. (1337 KG.)	3473 LBS. (1575 KG.)
SHIPPING WEIGHT:	3073 LBS. (1393,8 KG.)	3473 LBS. (1575 KG.)
EXPORT CRATE SIZE:	151.7 CU. FT. (4,29 CU. M.)	



THE GORMAN-RUPP COMPANY • MANSFIELD, OHIO

GORMAN-RUPP OF CANADA LIMITED • ST. THOMAS, ONTARIO, CANADA

Specifications Subject to Change Without Notice

Printed in U.S.A.