

A

Self Priming Centrifugal Pump

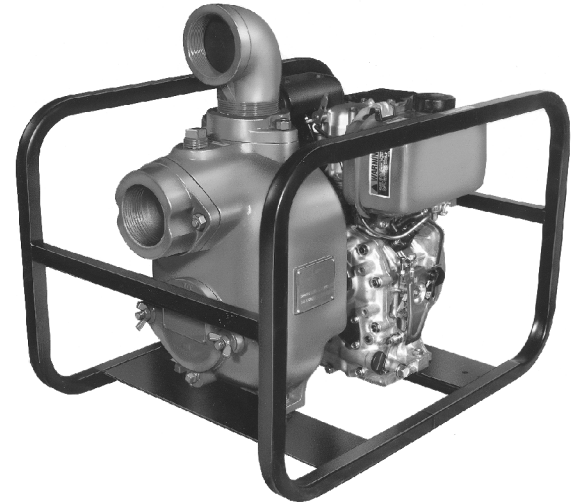


Diesel Engine Driven
Models 13D-L70EE *and*
13D-L70EE S/G
Size 3" x 3"



18MTC

Total Head		Capacity Of Pump In U.S. Gallons Per Minute At Continuous Performance				
P.S.I.	Feet					
29.9	69	82	82	82	82	82
26.0	60	153	158	158	158	158
21.7	50	178	220	233	233	233
17.3	40	180	237	280	285	285
13.0	30	183	244	292	321	328
8.7	20	185	250	297	337	362
Suction Lift		25'	20'	15'	10'	5'



PUMP SPECIFICATIONS

Size: 3" x 3" (76 mm x 76 mm) NPT - Female.

Casing: Aluminum No. 356-T6 With Gray Iron No. 30. Cutwater Insert. Maximum Operating Pressure 49 psi (338 kPa).*

Open Type, Two Vane Impeller: Ductile Iron 65-45-12. Handles 1-1/2" (38 mm) Diameter Spherical Solids.

Replaceable Wear Plate: Steel No. 1018.

Removable Cover Plate: Aluminum No. 356-T6, 4 lbs. (1,8 kg).

Intermediate Bracket: Aluminum No. 356-T6.

Seal: Double Grease-Lubricated with Spring Loaded Grease Cup. Sintered Bronze Stationary Seal Seats. Rotating Faces are Steel. Maximum Temperature of Liquid Pumped, 110°F (43°C).* Maximum Suction Pressure 10 PSI (69 kPa).*

Seal Liner: Brass No. 70-30.

Flap Valve: Buna-N with Nylon Reinforcement; Steel No. 1018; Brass.

Flange: Aluminum No. 356-T6.

Gaskets: Resistant Synthetic Rubber & Cork.

O-Rings: Buna-N.

Hardware: Standard Plated Steel.

Standard Equipment: Roll Cage w/Rubber Feet. Strainer. 90° Discharge Elbow.

Optional Equipment: Two Wheel Truck Assembly with 2.75" x 10" (70 mm x 254 mm) Semi-Pneumatic Tires.

* Consult Factory for Applications Exceeding Maximum Pressure and/or Temperature Indicated.



ENGINE SPECIFICATIONS

Model: Yanmar L70EE.

Type: Single Cylinder, Four Cycle, Air Cooled, Diesel Engine.

Displacement: 18.7 Cu. In. (306 cc).

Governor: Variable Speed, Engine Mounted.

Lubrication: Forced Circulation.

Air Cleaner: Dry Type.

Oil Reservoir: 1.16 U.S. Qts. (1,1 liter).

Fuel Tank: (13D-L70EE) 0.92 U.S. Gal. (3,5 liters).

(13D-L70EE S/G) 1.45 U.S. Gal. (5,5 liters).

Full Load Operating Time:

(13D-L70EE) 2.2 Hours

(13D-L70EE S/G) 3.4 Hours

Starter: (13D-L70EE) Rope Rewind or

(13D-L70EE S/G) 12 Volt Electric.

Standard Equipment: Muffler: Standard Exhaust Silencer with Guard. 90° Exhaust Deflector. Hand Throttle and Stop Control.

YANMAR PUBLISHED PERFORMANCE:

Maximum Continuous B.H.P. 6.0 (4,5 kW) @ 3600 RPM

Maximum Dynamic B.H.P. 6.7 (5 kW) @ 3600 RPM



THE GORMAN-RUPP COMPANY • MANSFIELD, OHIO

www.gormanrupp.com

GORMAN-RUPP OF CANADA LIMITED • ST. THOMAS, ONTARIO, CANADA

Specifications Subject to Change Without Notice

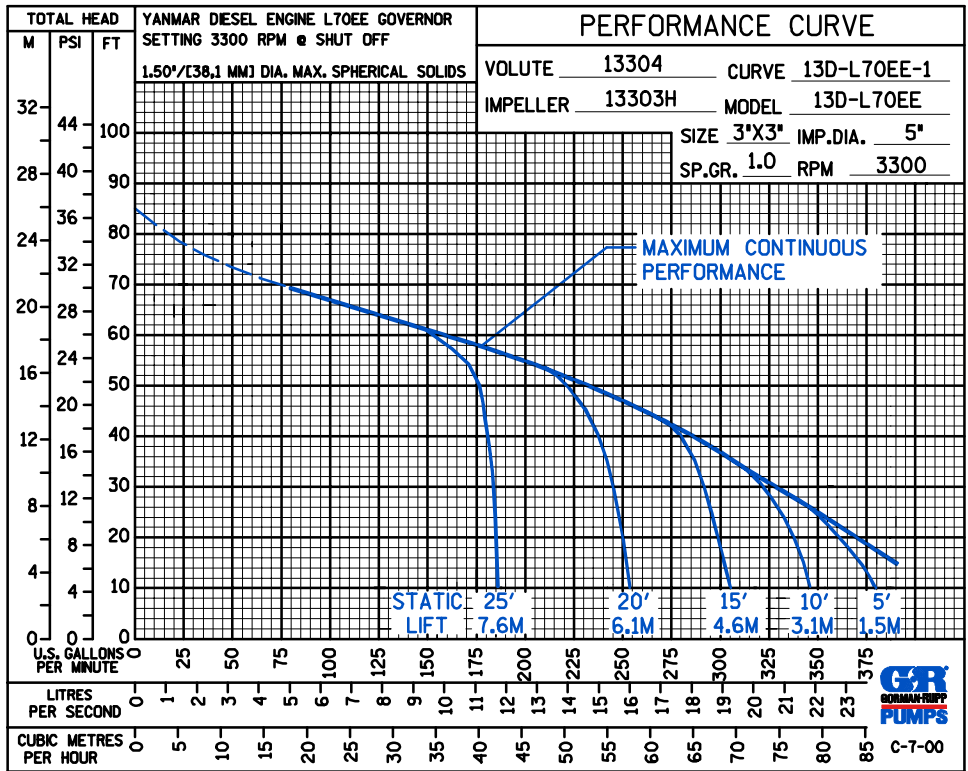
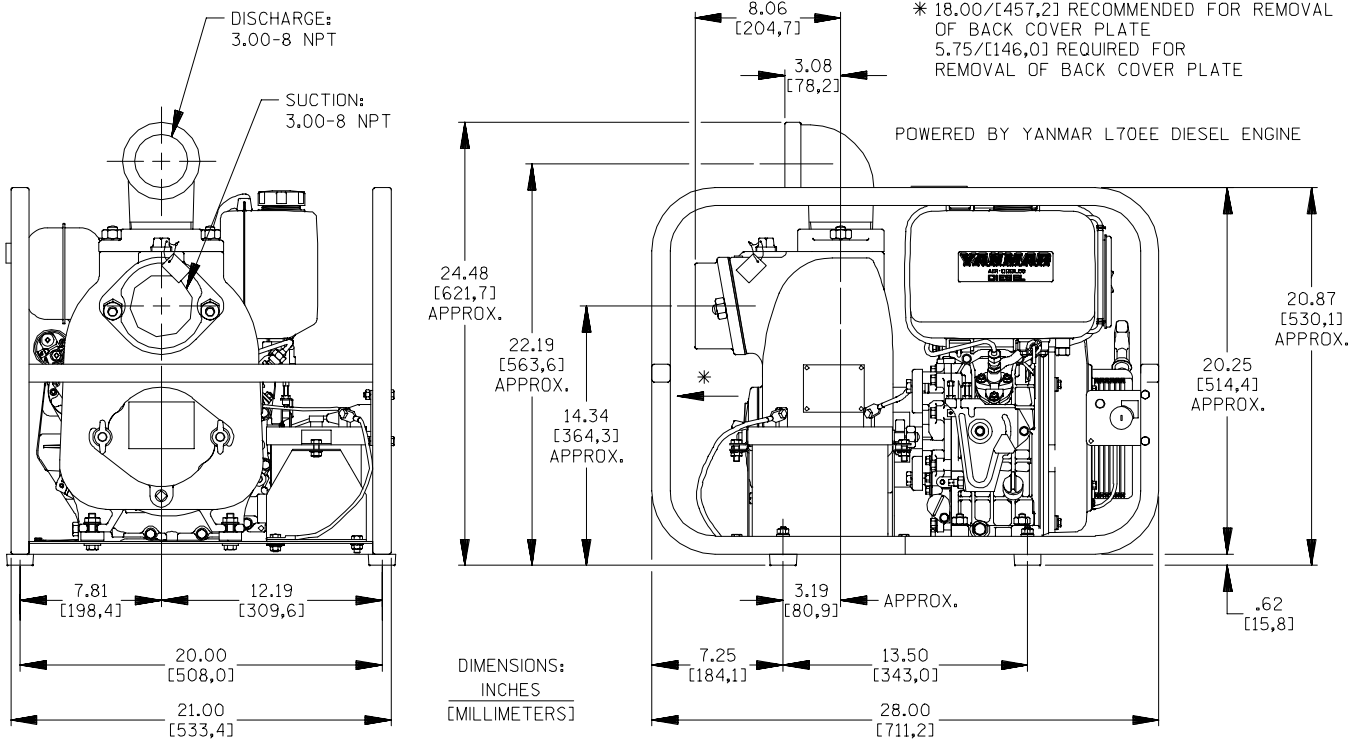
Printed in U.S.A.

Specification Data

SECTION 45, PAGE 565

APPROXIMATE DIMENSIONS and WEIGHTS

	WITHOUT S/G	WITH S/G
NET WEIGHT:	119 LBS. (54 KG.)	139 LBS. (63 KG.)
SHIPPING WEIGHT:	124 LBS. (56 KG.)	144 LBS. (65 KG.)
EXPORT CRATE:	8 CU. FT. (0,2 CU. M.)	
WHEEL KIT ADD 22 LBS. (10 KG.);	SHIPPING CRATE (SEPARATE) 3 CU. FT. (0,1 CU. M.)	



THE GORMAN-RUPP COMPANY • MANSFIELD, OHIO

GORMAN-RUPP OF CANADA LIMITED • ST. THOMAS, ONTARIO, CANADA

Specifications Subject to Change Without Notice

Printed in U.S.A.