

A

Self Priming Centrifugal Pump

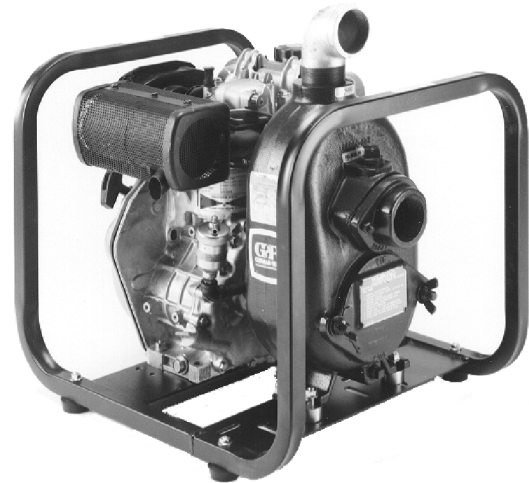


Diesel Engine Driven
**Model 12D-L48EE and
12D-L48EE S/G**
Size 2" x 2"



10MTC

Total Head		Capacity Of Pump In U.S. Gallons Per Minute (GPM) At Continuous Performance				
P.S.I.	Feet					
46.0	106	42	42	42	42	42
43.4	100	61	61	61	61	61
39.0	90	84	94	94	94	94
34.7	80	88	118	125	125	125
30.3	70	91	123	138	148	148
26.0	60	92	125	141	163	166
Suction Lift		25'	20'	15'	10'	5'



PUMP SPECIFICATIONS

Size: 2" x 2" NPT (51 mm x 51 mm) Female.

Pump Casing: Aluminum Alloy 356-T6 with Gray Iron No. 30 Cutwater Insert. Maximum Operating Pressure 76 psi (524 kPa).*

Open Type, Two Vane Impeller: Ductile Iron 65-45-12. Handles 1 3/16" (30 mm) Diameter Spherical Solids.

Replaceable Wear Plate: Carbon Steel Grade C-1045.

Removable Cover Plate: Aluminum No. 356-T6, 4 lbs. (1,8 kg).

Intermediate Bracket: Gray Iron No. 30.

Seal:

Double, Grease-Lubricated with Spring-Loaded Grease Cup. Sintered Bronze Stationary Seal Seats. Steel Rotating Faces. Neoprene Packing Rings. Maximum Temperature of Liquid Pumped, 110°F (43°C).* Maximum Suction Pressure 10 psi (69 kPa).*

Seal Liner: Copper Alloy C26000.

Flap Valve: Buna-N with Nylon Reinforcement; Gray Iron No. 30.

Flange: Aluminum No. 356-T6.

Gaskets: Cork with Nitrile Binder (NC710) and Vegetable Fiber.

Hardware: Standard Plated Steel.

Roll Cage with Rubber Feet.

Strainer.

90° Discharge Elbow.

Optional Equipment: Two Wheel Truck Assembly with 2.75" x 10" (70 mm x 254 mm) Semi-Pneumatic Tires.

* Consult Factory for Applications Exceeding Maximum Pressure and/or Temperature Indicated.



WARNING!

Do not use in explosive atmosphere or for pumping volatile flammable liquids.

ENGINE SPECIFICATIONS

Model: Yanmar L48EE-DP.

Type: Four Cycle, Air Cooled, Diesel Engine.

Displacement: 13.4 Cu. In. (219 cc).

Governor: Variable Speed, Engine Mounted.

Lubrication: Forced Circulation.

Air Cleaner: Dry Type.

Oil Reservoir: 0.85 U.S. Qts. (0,8 liter).

Fuel Tank: 12D-L48EE: 0.66 U.S. Gal. (2,5 liters).
12D-L48EE S/G: 0.92 U.S. Gal. (3,5 liters).

Full Load Operating Time:

12D-L48EE: 1.8 Hours.

12D-L48EE S/G: 2.5 Hours.

Starter: 12D-L48EE: Rope Rewind.

12D-L48EE S/G: 12 Volt Electric.

Standard Equipment: Muffler: Standard Exhaust Silencer with Guard. 90° Exhaust Deflector. Hand Throttle and Stop Control.

YANMAR PUBLISHED PERFORMANCE:

Maximum Continuous B.H.P. 4.2 (3,1 kW) @ 3600 RPM
Maximum Dynamic B.H.P. 4.7 (3,5 kW) @ 3600 RPM



THE GORMAN-RUPP COMPANY • MANSFIELD, OHIO

www.gormanrupp.com

GORMAN-RUPP OF CANADA LIMITED • ST. THOMAS, ONTARIO, CANADA

Specifications Subject to Change Without Notice

Printed in U.S.A.

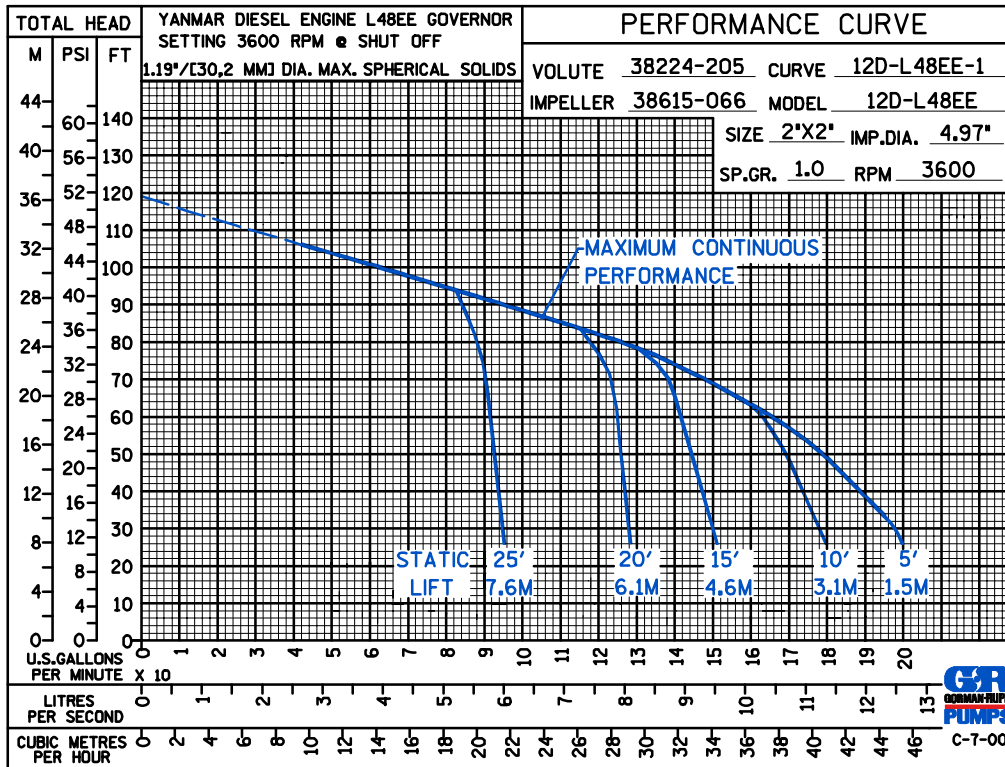
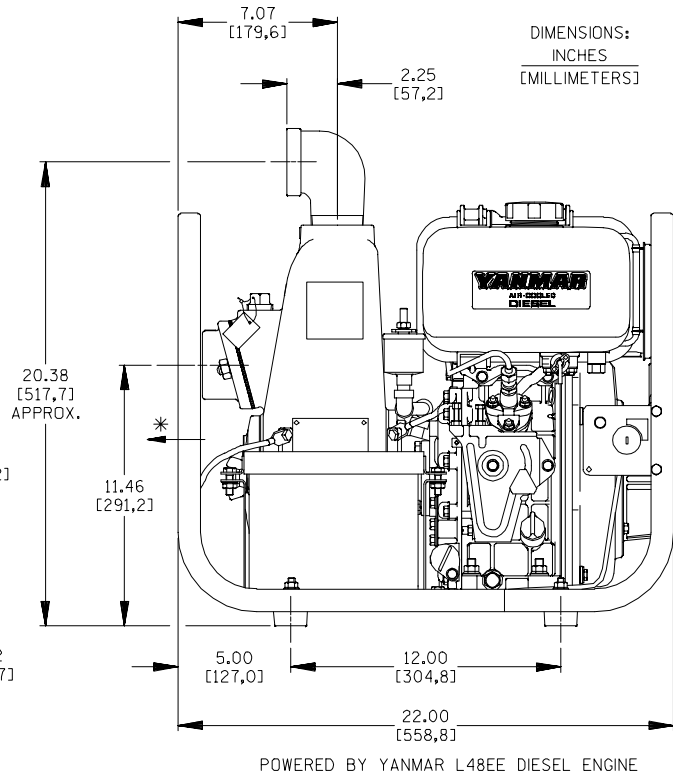
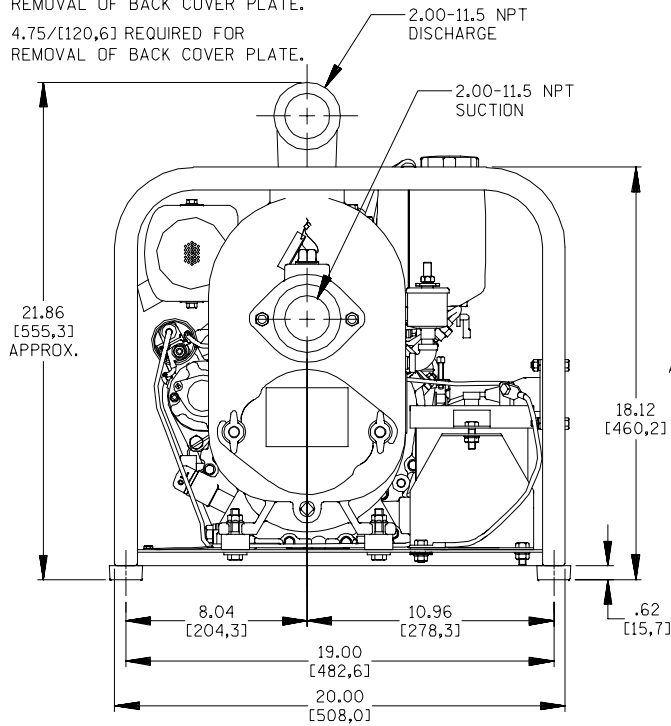
Specification Data

APPROXIMATE DIMENSIONS and WEIGHTS

	12D-L48EE	12D-L48EE S/G
NET WEIGHT:	108 LBS. (49 KG.)	128 LBS. (58 KG.)
SHIPPING WEIGHT:	118 LBS. (54 KG.)	138 LBS. (63 KG.)
EXPORT CRATE:	8 CU. FT. (0.2 CU. M.)	
WHEEL KIT ADD	22 LBS. (10 KG.); SHIPPING CRATE (SEPARATE) 3 CU. FT. (0.1 CU. M.)	

SECTION 45, PAGE 535

* 18.00/[457,2] RECOMMENDED FOR REMOVAL OF BACK COVER PLATE.
4.75/[120,6] REQUIRED FOR REMOVAL OF BACK COVER PLATE.



THE GORMAN-RUPP COMPANY • MANSFIELD, OHIO

GORMAN-RUPP OF CANADA LIMITED • ST. THOMAS, ONTARIO, CANADA

Specifications Subject to Change Without Notice

Printed in U.S.A.