



Self Priming Centrifugal Pump

Gasoline Engine Driven
Model 12D-GX160
Size 2" x 2"



10MTC

Total Head		Capacity Of Pump In U.S. Gallons Per Minute (GPM) At Continuous Performance				
P.S.I.	Feet					
46.0	106	46	46	46	46	46
43.3	100	64	64	64	64	64
39.0	90	76	92	92	92	92
34.7	80	81	104	120	120	120
30.3	70	82	109	130	142	143
26.0	60	82	110	132	152	161
21.7	50	82	110	132	154	173
17.3	40	82	110	133	155	178
13.0	30	83	110	133	155	180
Suction Lift		25'	20'	15'	10'	5'



PUMP SPECIFICATIONS

Size: 2" x 2" NPT (51 mm x 51 mm) Female.
Pump Casing: Aluminum Alloy 356-T6 with Gray Iron No. 30 Cutwater Insert. Maximum Operating Pressure 70 psi (483 kPa).
Open Type, Two Vane Impeller: Ductile Iron 65-45-12. Handles 1 3/16" (30 mm) Diameter Spherical Solids.
Replaceable Wear Plate: Carbon Steel Grade C-1045.
Removable Cover Plate: Aluminum No. 356-T6, 4 lbs. (1,8 kg).
Intermediate Bracket: Gray Iron No. 30.
Seal: Double, Grease-Lubricated with Spring-Loaded Grease Cup. Sintered Bronze Stationary Seal Seats. Steel Rotating Faces. Neoprene Packing Rings. Maximum Temperature of Liquid Pumped, 110°F (43°C). * Maximum Suction Pressure 10 psi (69 kPa).
Seal Liner: Copper Alloy C26000.
Flap Valve: Buna-N with Nylon Reinforcement; Gray Iron No. 30.
Flange: Aluminum No. 356-T6.
Gaskets: Cork with Nitrile Binder (NC710) and Vegetable Fiber.
Hardware: Standard Plated Steel.
Roll Cage with Rubber Feet.
Strainer.
90° Discharge Elbow.
Optional Equipment: Two Wheel Truck Assembly with 2.75" x 10" (70 mm x 254 mm) Semi-Pneumatic Tires.

* Consult Factory for Applications Exceeding Maximum Pressure and/or Temperature Indicated.



ENGINE SPECIFICATIONS

Model: Honda GX160.
Type: Single Cylinder, Four Cycle, Air Cooled, Overhead Valve, Gasoline Engine.
Displacement: 9.9 Cu. In. (160 cc).
Carburetor: Horizontal Type.
Governor: Mechanical.
Lubrication: Splash System.
Air Cleaner: Dual Element Dry Type.
Oil Reservoir: 0.63 U.S. Pts. (0,6 Liter).
Fuel Tank: 0.95 U.S. Gal. (3,6 Liters).
Full Load Operating Time: 2.0 Hrs.
Starter: Rope Rewind.

Standard Features: Manual Throttle Control with Top Speed Limit. Manual Choke and Stop. Muffler with Guard. "Oil Alert™" Low Oil Shut Down.

HONDA

PUBLISHED PERFORMANCE:

Maximum Continuous BHP 4.7 (3,5 kW) @ 3600 RPM
 Maximum Dynamic BHP 5.5 (4,1 kW) @ 3600 RPM



THE GORMAN-RUPP COMPANY • MANSFIELD, OHIO

www.gormanrupp.com
 GORMAN-RUPP OF CANADA LIMITED • ST. THOMAS, ONTARIO, CANADA
 Specifications Subject to Change Without Notice

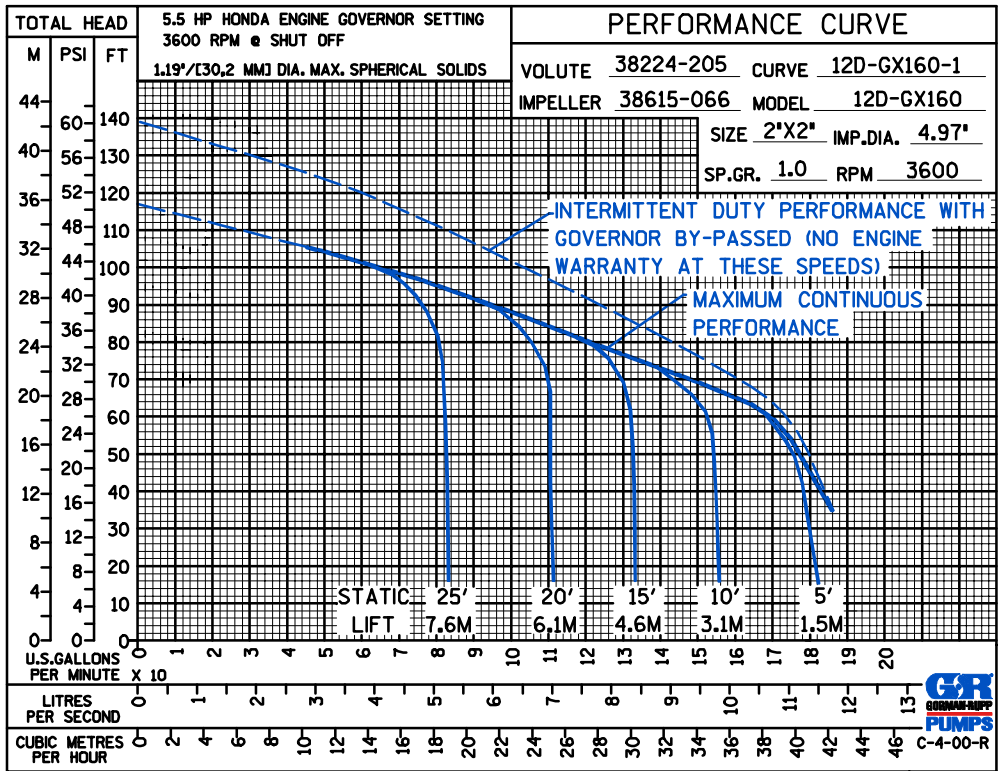
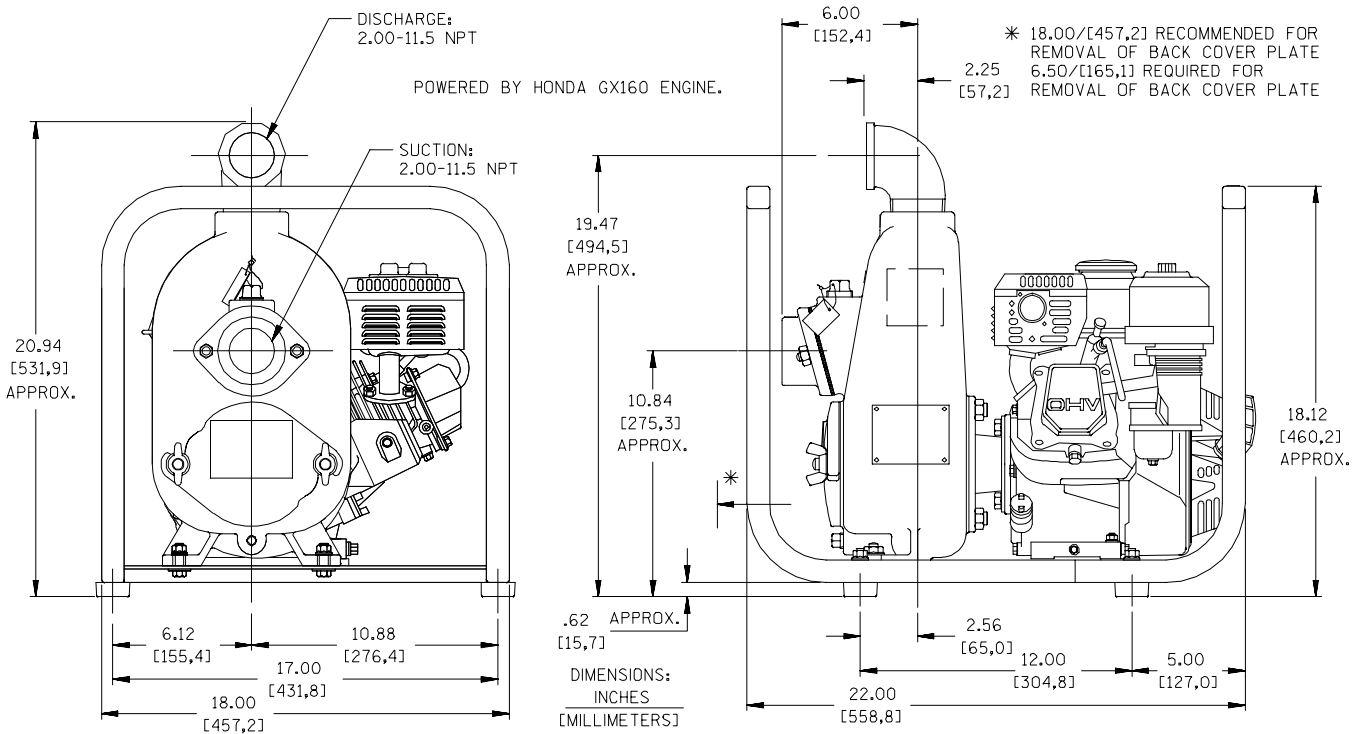
Printed in U.S.A.

Specification Data

APPROXIMATE DIMENSIONS and WEIGHTS

NET WEIGHT: 79 LBS. (36 KG.)
 SHIPPING WEIGHT: 84 LBS. (38 KG.)
 EXPORT CRATE: 5.6 CU. FT. (0,16 CU. M.)
 WHEEL KIT ADD 25 LBS. (11.3 KG.); SHIPPING CRATE (SEPARATE) 3 CU. FT. (0,1 CU. M.)

SECTION 45, PAGE 527



THE GORMAN-RUPP COMPANY • MANSFIELD, OHIO

GORMAN-RUPP OF CANADA LIMITED • ST. THOMAS, ONTARIO, CANADA

Specifications Subject to Change Without Notice

Printed in U.S.A.